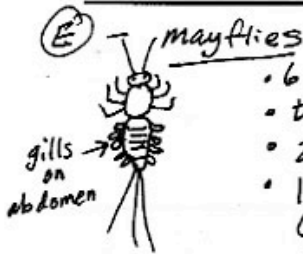


# Macros Cheat Sheet

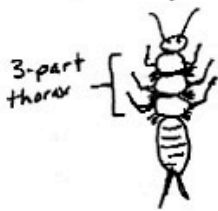


- 6 legs
- thorax is not divided
- 2 or 3 tails
- 1 pair of wing pads (if present)
- gills on sides of abdomen

## may fly families:

- Ameletid
- Small minnow
- Flat-headed
- Spiny crawler
- prong-gilled

## (P) - Stoneflies



- 6 legs
- thorax has 3 parts
- only 2 tails
- 2 pair of wing pads
- no gills on abdomen
- may have gills on thorax or neck

## Stonefly families

- golden
- yellow
- little green
- little brown
- Slender winter
- giant

## (T) - Caddisflies



- 6 legs
- flesh abdomen
- 2 prolegs with hooks at end of abdomen
- some build cases, some nets, some free-living

## Caddisfly families

- northern case-maker
- saddle case-maker
- humpless case-maker
- net-spinner
- free-living
- fingernet

## Flat worms



- flattened body
- no segments
- usually has eyespots

## Aquatic Earthworms



- round, segmented body
- small hair-like bristles

## snails



- hard spiral shell
- gilled snail = right-side opening
- pouch snail (lunged) left-side opening

## Limpet



- low, dome-shaped shell

Clams



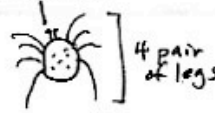
- 2 shells attached at hinge
- soft bodies inside
- clams are smaller & more rounded
- mussels are flat, oblong & lopsided

Mussels



Water mite

pedipalps



- small moving dots
- round body with 8 legs
- color: red, orange, yellow, green, ...

Sowbugs



- flattened top-to-bottom
- numerous legs
- similar to pill bugs... on land

Scuds



- flattened side-to-side
- shrimp-like
- side swimmers

Crayfish



- lobster-like body
- 5 pair of legs, including 2 claws
- fan-shaped flipper at end of jointed tail

Water beetles



adult



larva

- larva:
- small, elongated bodies with hardened plates
  - 6 short legs

Dragonflies



- elongated body
- oval abdomen tapers to point
- large eyes

Damselflies



- long, thin body
- 3 flat, paddle-like gills at end
- large eyes

Alderflies



- large filaments along abdomen
- mouth has large pinchers
- ends with single filament

Dobsonflies

- large filaments along abdomen
- mouth has large pinchers
- ends with 2 prolegs

Midges



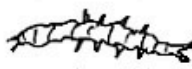
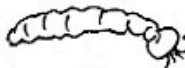
- small & worm-like, but with head + prolegs
- "twitchy" movement

Black flies



- bowling-pin shaped body
- attaches at end
- collapsible fan on head

Crane flies



prolegs

- fleshy, caterpillar-like body
- may have prolegs &/or swollen area
- may end with hair-like extensions or lobes

Boatman



- oval body with oar-like legs
- back swimmer swims upside down + can BITE!

Striders



- skates across top of water