

# Aquatic Macroinvertebrates

---



flatworm



aquatic earthworm



snail



clam



mussel



water mite



scud



aquatic sowbug



crayfish



water boatman



water strider



whirligig beetle



riffle beetle larva



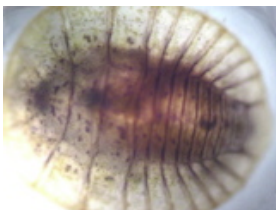
riffle beetle adult



predaceous beetle larva



predaceous beetle adult



water penny



dragonfly



damsel fly



dobsonfly



ameletid mayfly



small minnow mayfly



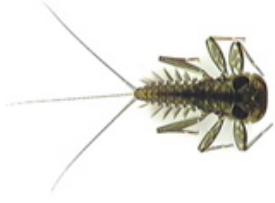
small minnow mayfly



flat-headed mayfly

# Aquatic Macroinvertebrates

---



flat-headed mayfly



flat-headed mayfly



spiny crawler mayfly



spiny crawler mayfly



spiny crawler mayfly



prong-gill mayfly



golden stonefly



little yellow stonefly



little yellow stonefly



little brown stonefly



little green stonefly



slender winter stonefly



giant stonefly



net-spinner caddisfly



northern case-maker caddisfly



northern case-maker caddisfly



saddle-case-maker caddisfly



free-living caddisfly



finger-net caddisfly



black fly



midge



midge



crane fly



crane fly